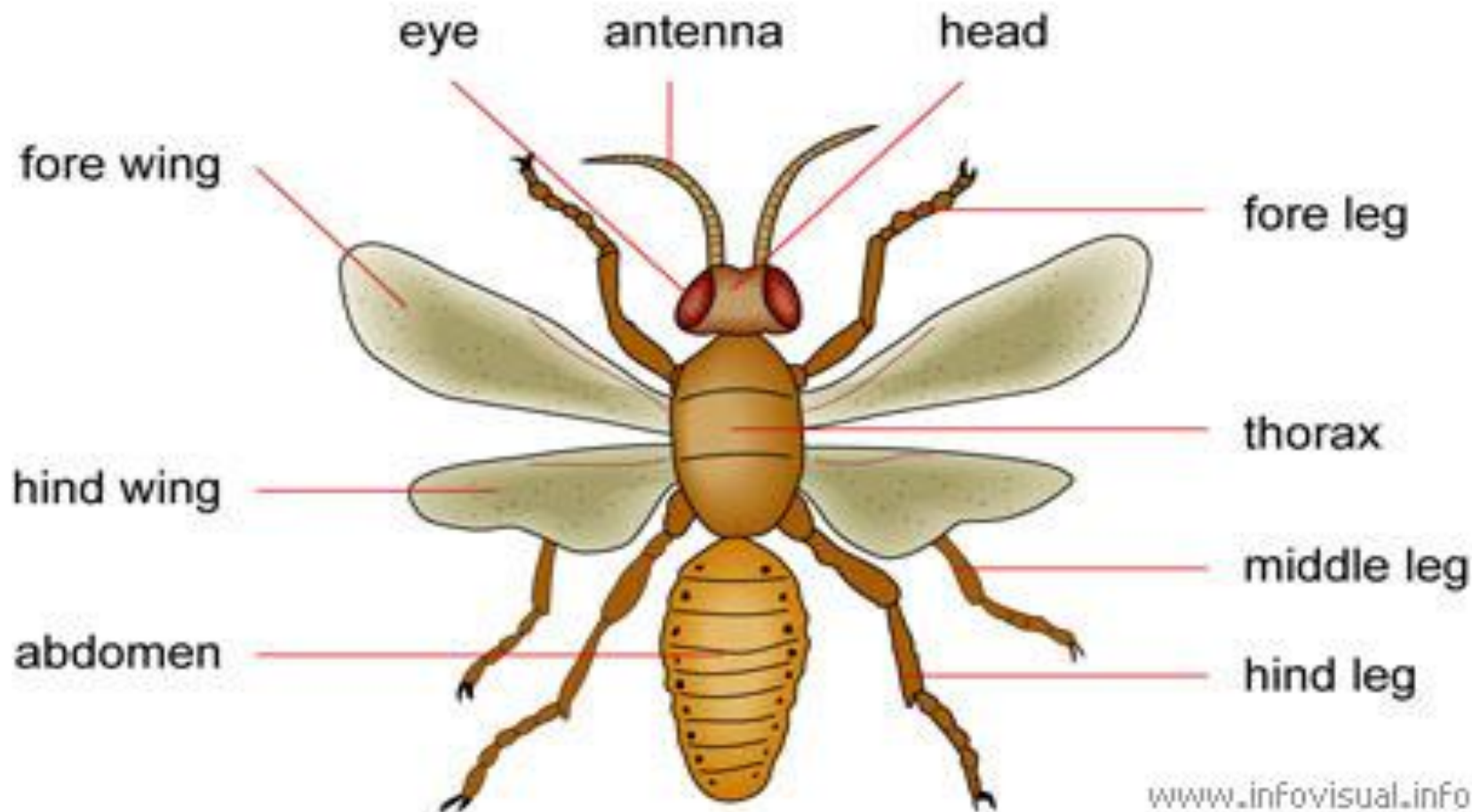
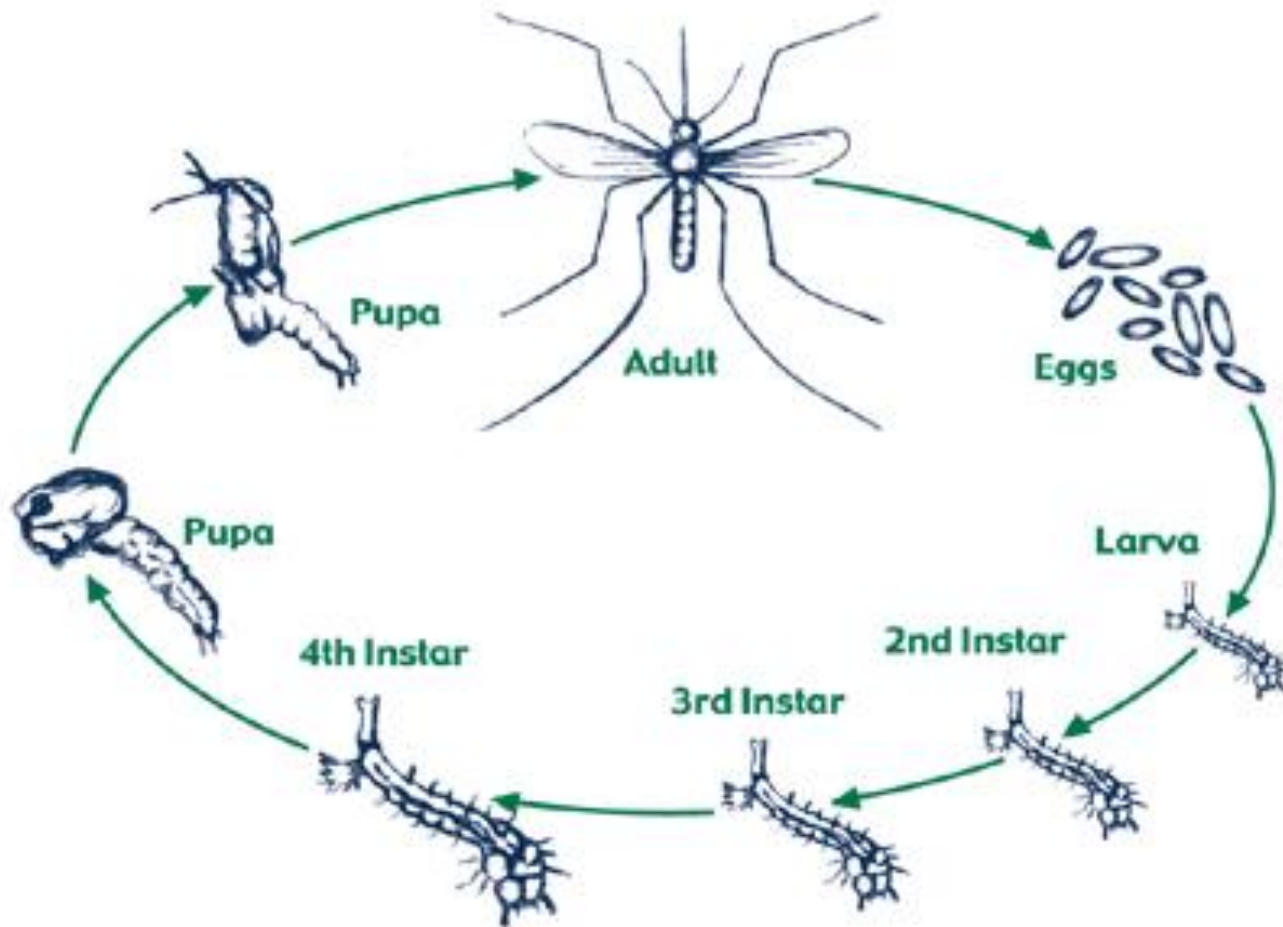


MORPHOLOGY OF A FLYING INSECT



Mosquitoes Life Cycle

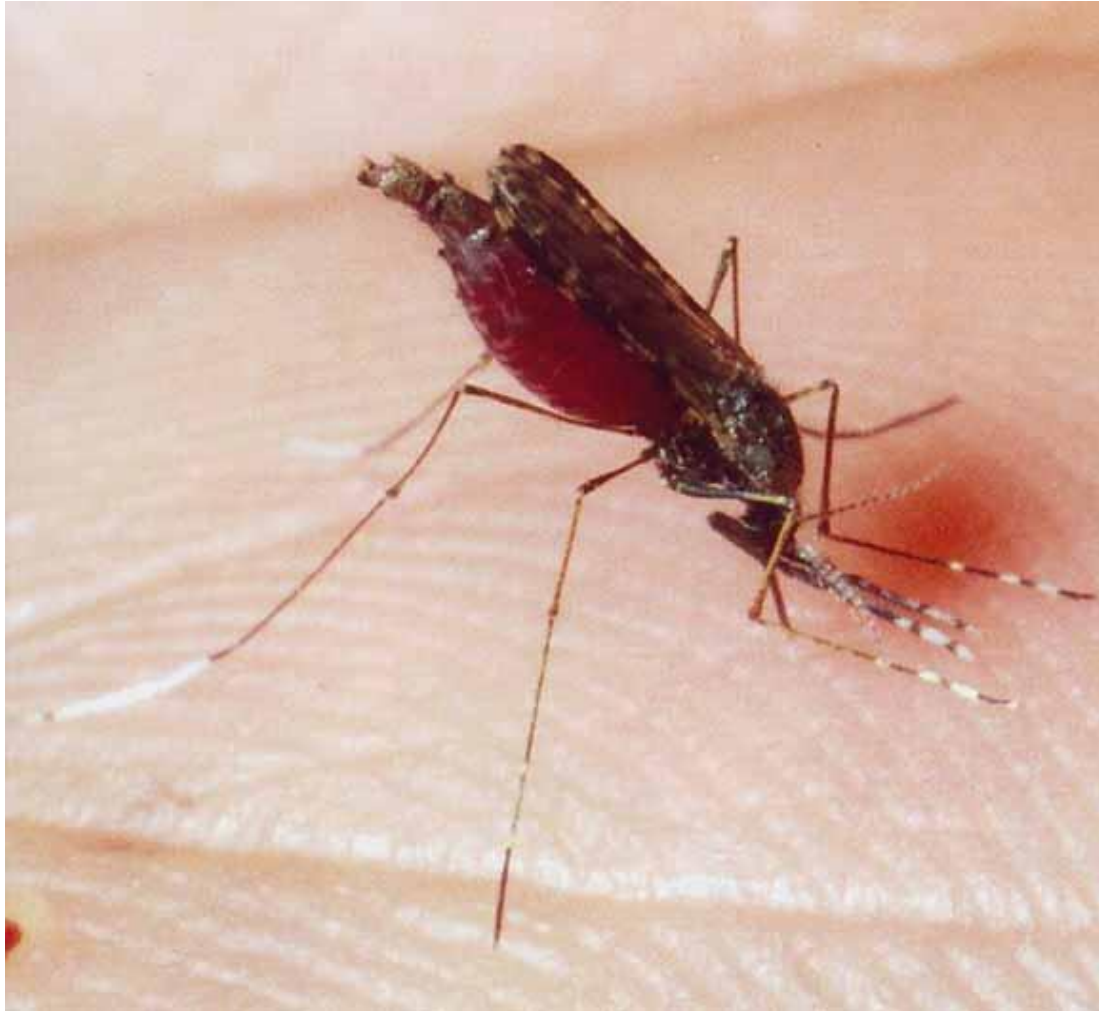


Anopheles Mosquito



© 2002 Dept. Medical Entomology, ICPMR

Anopheles Mosquito



Anopheles Egg



Anopheles Eggs



Anopheles Larvae



Anopheles Larvae



Anopheles Pupae



Culicine Mosquito (*Aedes aegypti*)



Aedes aegypti
the yellow fever mosquito
Copyright © 1995 Leonard E. Munstermann

Culicine Mosquito (*Aedes aegypti*)



Culicine Mosquito (*Culex quinquefasciatus*)



Culex (laying-eggs)



Culicine Eggs



Culicine Larvae



Culicine Pupae

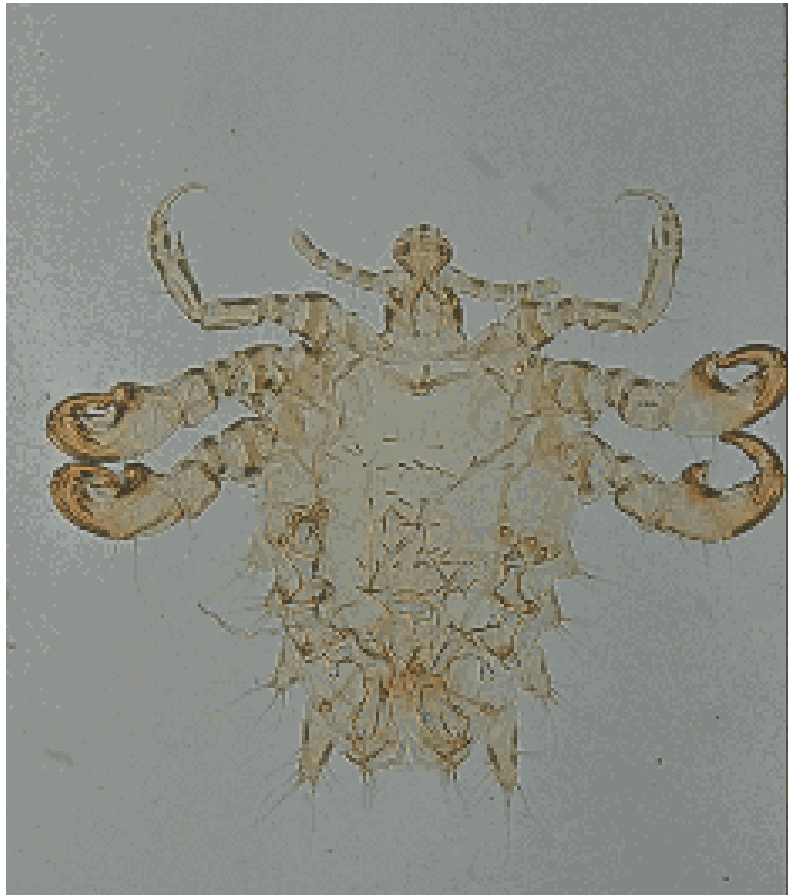


© 2002 Stephen L. Doggett

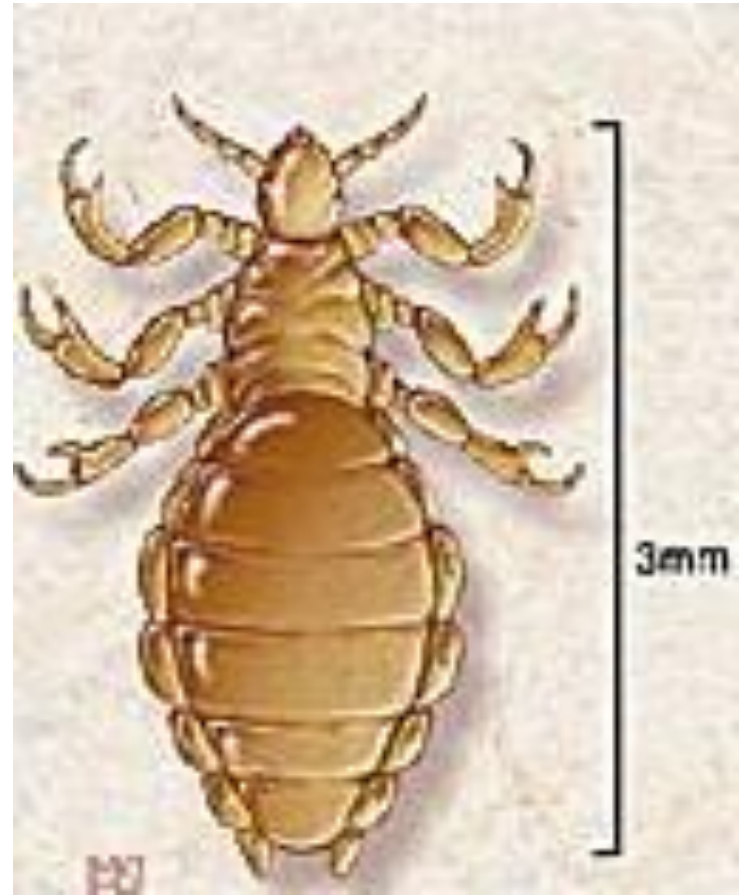
Sandfly (Male & Female)



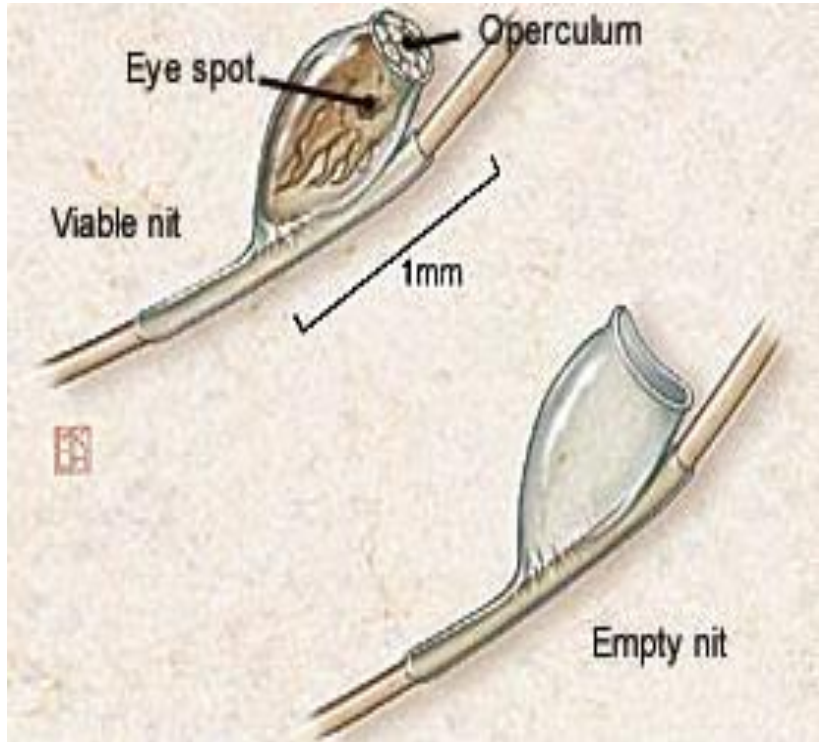
Crab Louse



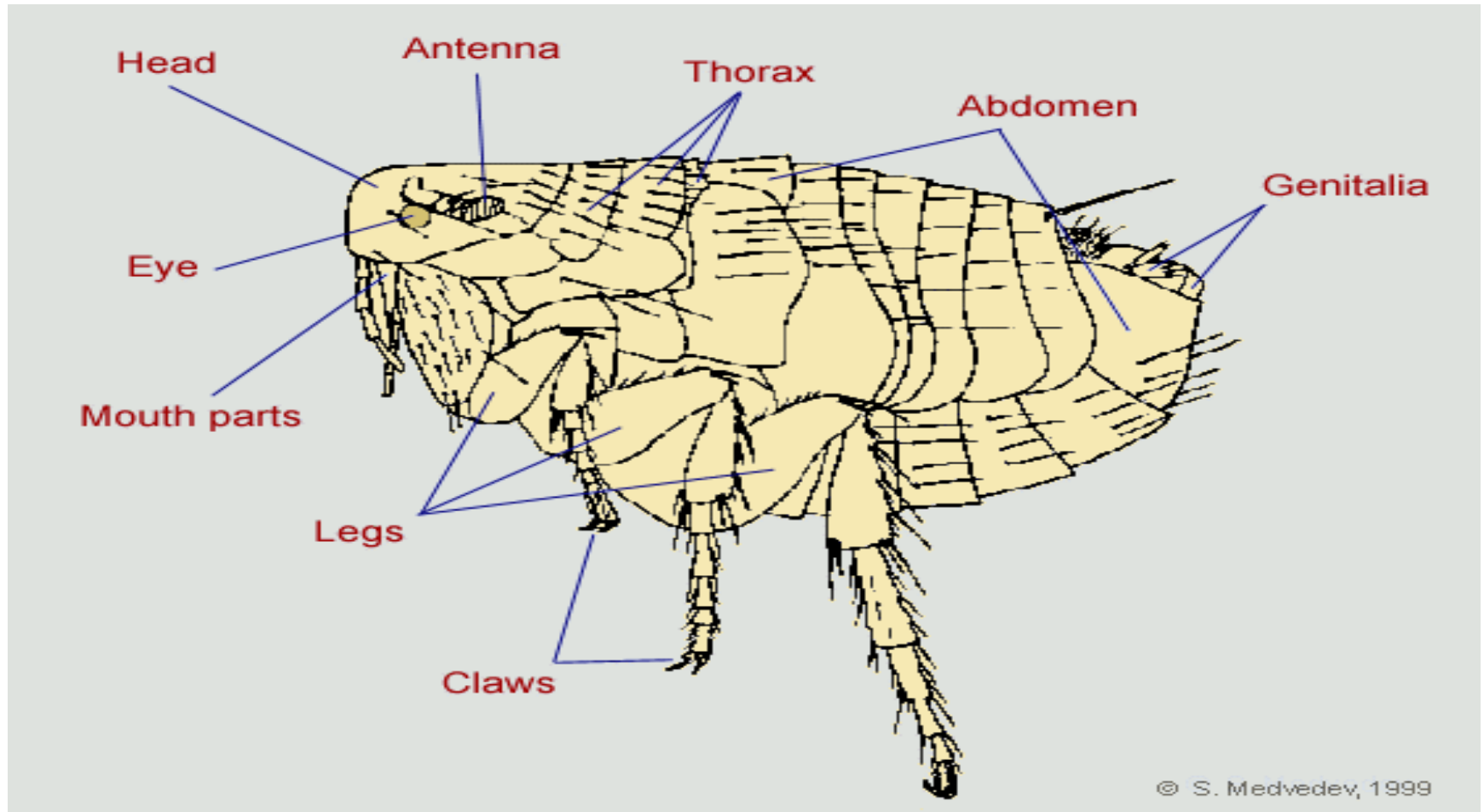
Body Louse



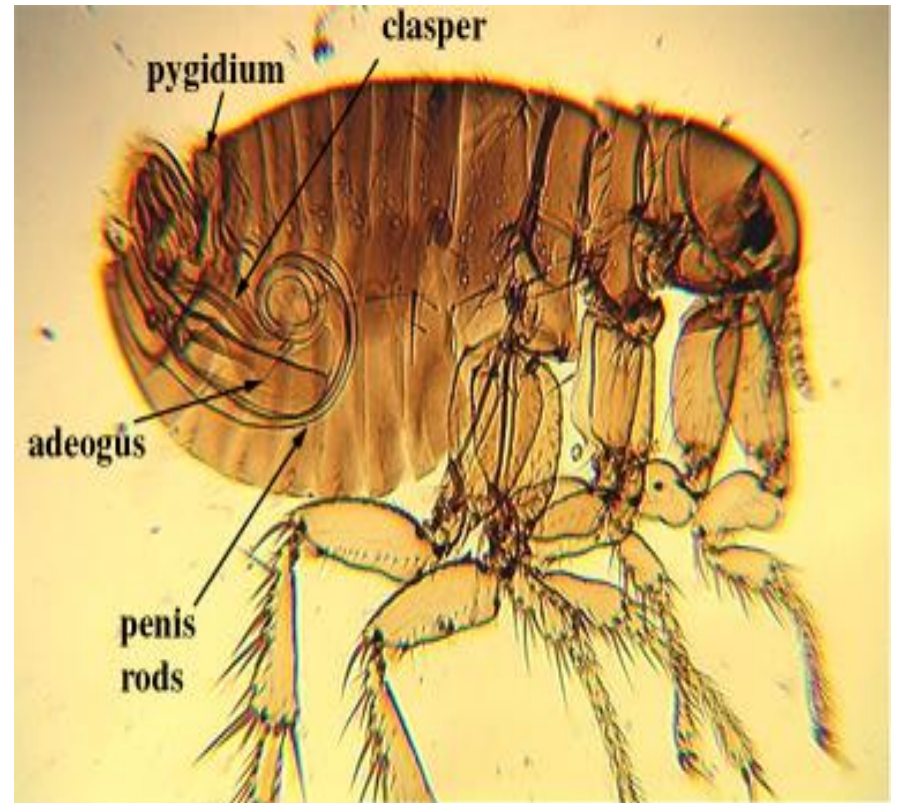
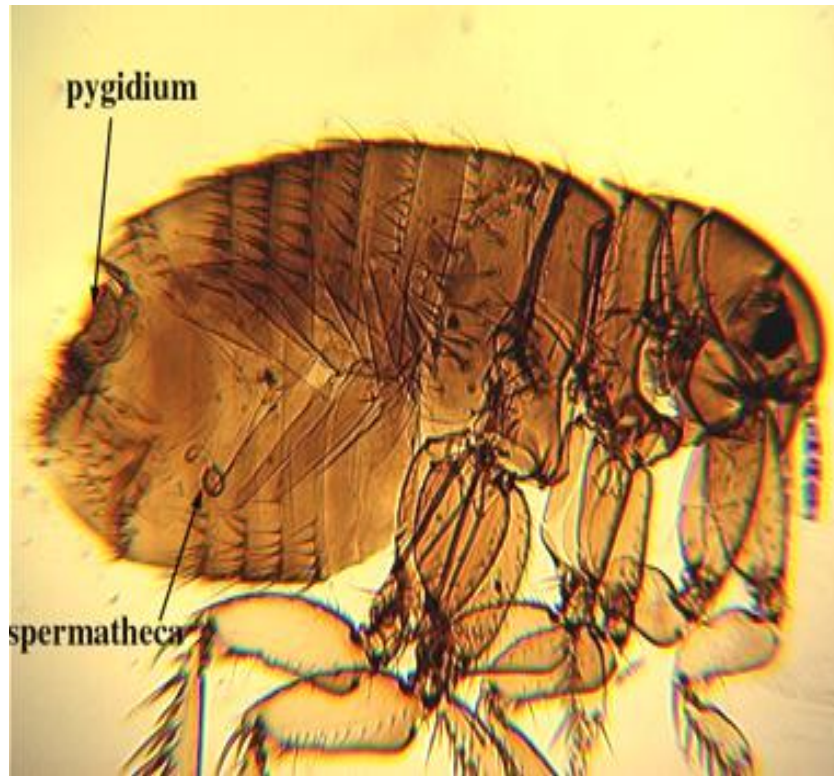
Nits



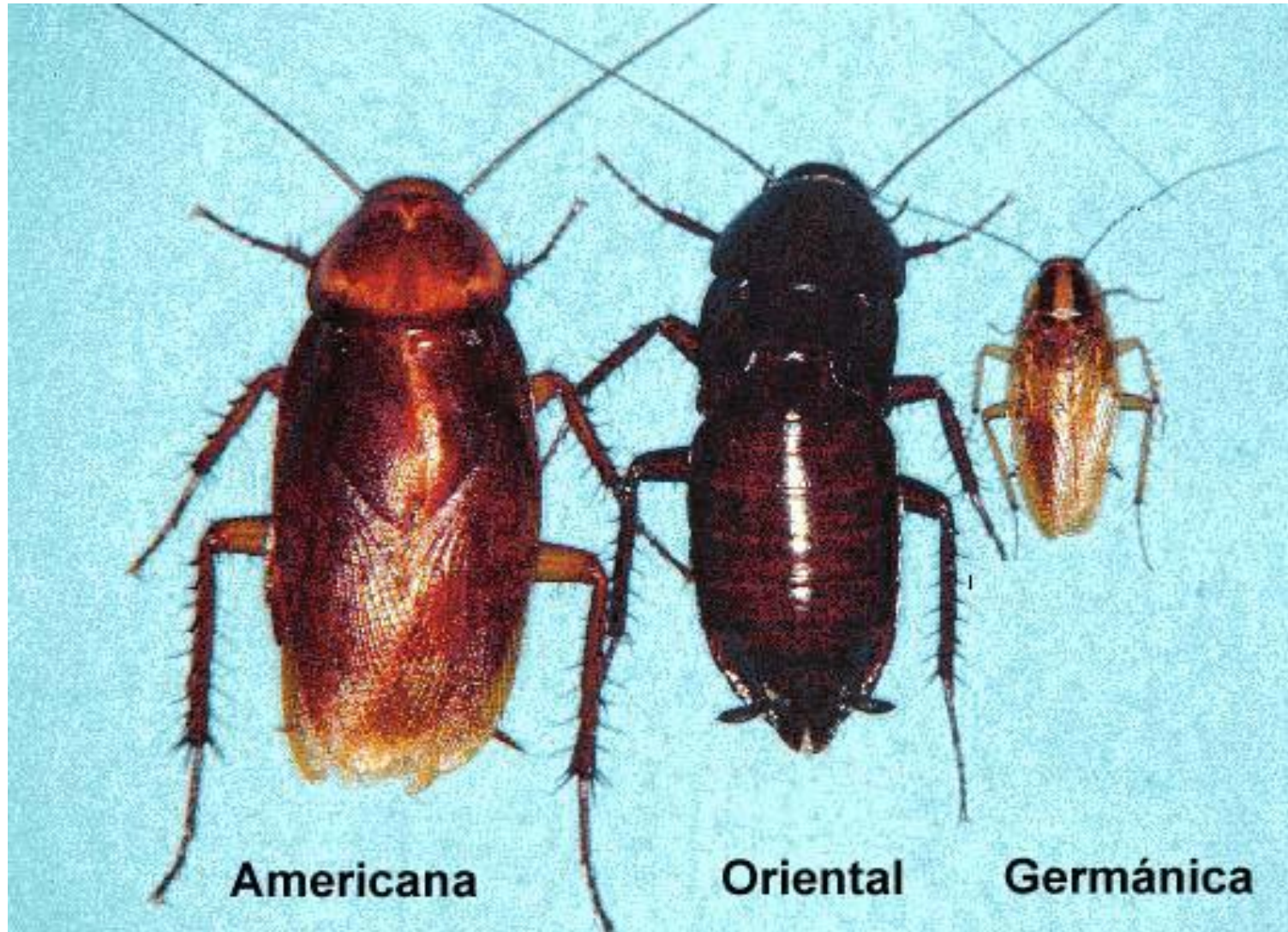
Flea Morphology



Pulex irritans (Man Flea)



Cockroaches



Americana

Oriental

Germánica

Cimex Spp.



Argasidae (Soft Tick)



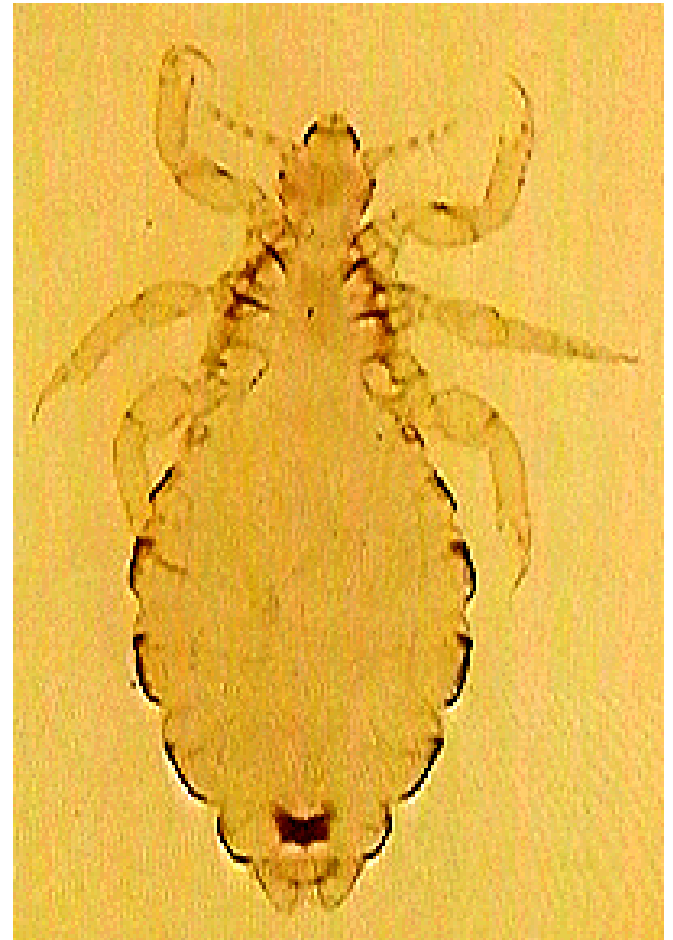
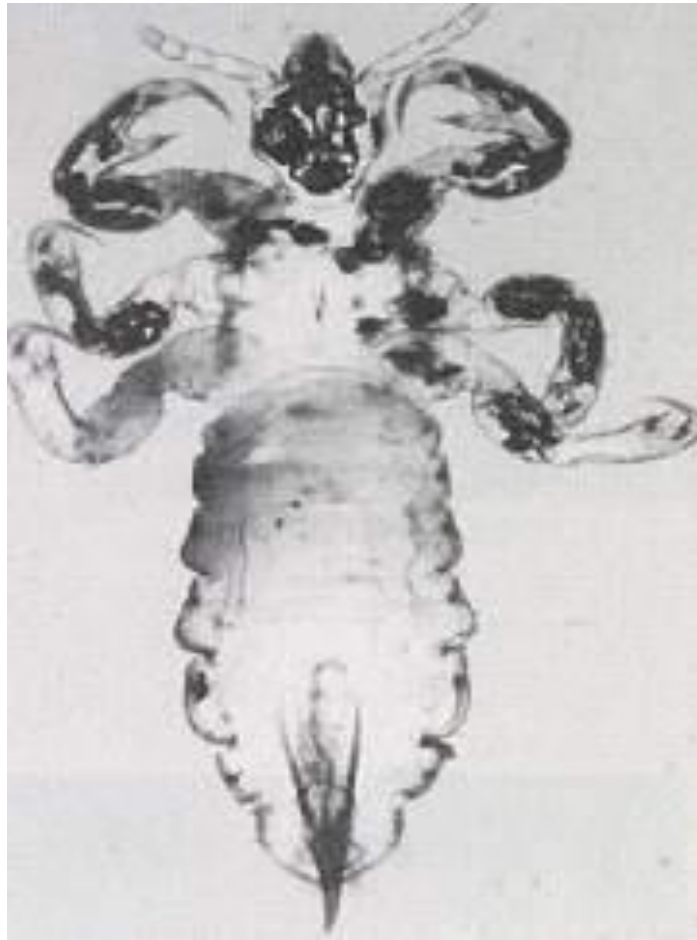
Ixodidae (Hard Tick)



Sarcoptes scabiei



Male & Female Pediculus



Scorpion

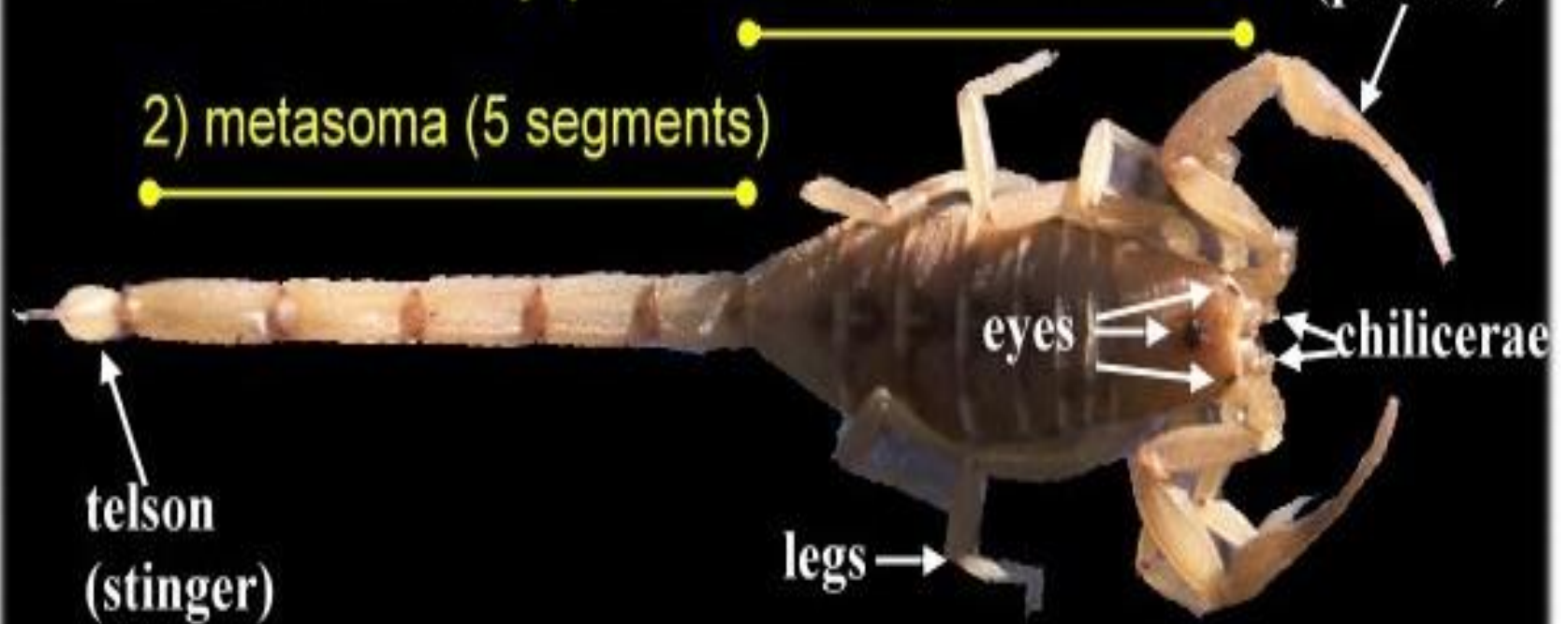
SCORPION ANATOMY

Two main body parts:

1) cephalothorax

2) metasoma (5 segments)

pedipalps
(pincers)



telson
(stinger)

legs

eyes

chelicerae

IDENTIFICATION

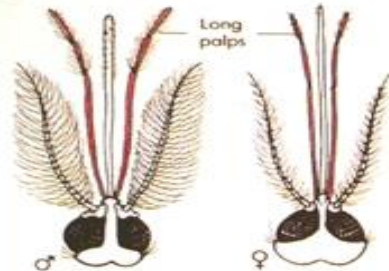
Anopheles

Posture

Culex

Body in one axis

Body in two axes



Mouthparts



Wings



Eggs



Larvae

